

### CBD Hemp Flower

NV  
Las Vegas, NV 89119  
orders@wholesalecbdflower.com  
(702) 338-6941  
Lic. #

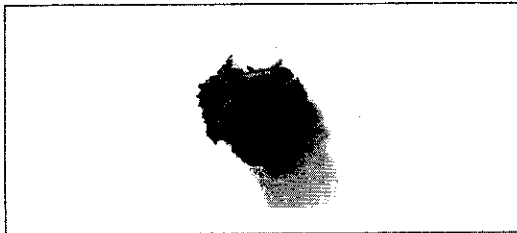
Sample: 2008NVC1908-11210

Strain: Sour Space Candy

Sample Received: 08/20/2020; Report Created: 08/20/2020

### Sour Space Candy

Plant, Flower - Cured  
Harvest Process Lot: ; METRC Batch: ; METRC Sample:



The photo on this report is of a sample collected by the lab and may vary from the final packaging

### Safety

Not Tested Pesticides	Not Tested Microbials	Not Tested Mycotoxins
Not Tested Solvents	Not Tested Heavy Metals	Not Tested Foreign Matter

### Cannabinoids

<LOQ	<LOQ	17.121%	NT
THCa	Total Potential THC	Total Potential CBD	Moisture
Analyte	LOQ %	Mass %	Mass mg/g
THCa	<0.110	<0.110	<1.10
Δ9-THC	<0.110	<0.110	<1.10
CBD	0.110	3.942	39.42
CBDa	0.110	15.027	150.27
CBC	0.055	0.258	2.58
CBG	0.055	<0.055	<0.55
CBN	0.110	<0.110	<1.10
THCV	0.055	0.098	0.98
Δ8-THC	0.055	<0.055	<0.55
CBGa	0.055	0.192	1.92
CBDV	0.055	<0.055	<0.55
<b>Total</b>		<b>19.517</b>	<b>195.17</b>

Total THC = THCa \* 0.877 + Δ9-THC + Δ8-THC  
Total CBD = CBDa \* 0.877 + CBD  
Total Edible THC = Δ9-THC + Δ8-THC  
LOQ = Limit of Quantitation; The reported result is based on a sample weight with the applicable moisture content for that sample; Unless otherwise stated all quality control samples performed within specifications established by the Laboratory. Cannabinoids analyzed by SOP-021.

Notes:

### Terpenes

Analyte	LOQ mg/g	Mass mg/g	Mass %
Cinnamon			
Hops			
Chamomile			
<b>Total Terpenes</b>		<b>9.813 mg/g</b>	
β-Caryophyllene	0.088	2.278	0.2278
β-Myrcene	0.088	1.665	0.1665
α-Bisabolol	0.088	1.526	0.1526
α-Humulene	0.088	1.194	0.1194
(-)-Guaiaol	0.088	0.931	0.0931
Linalool	0.088	0.468	0.0468
δ-Limonene	0.088	0.431	0.0431
Caryophyllene Oxide	0.088	0.427	0.0427
Nerolidol	0.088	0.296	0.0296
α-Pinene	0.088	0.234	0.0234
(-)-β-Pinene	0.088	0.207	0.0207
Ocimene	0.088	0.155	0.0155
α-Terpinene	0.088	<0.088	<0.0088
Camphene	0.088	<0.088	<0.0088
δ-3-Carene	0.088	<0.088	<0.0088
γ-Terpinene	0.088	<0.088	<0.0088
Geraniol	0.088	<0.088	<0.0088
(-)-Isopulegol	0.088	<0.088	<0.0088
p-Cymene	0.088	<0.088	<0.0088
Terpinolene	0.088	<0.088	<0.0088

LOQ = Limit of Quantitation; The reported result is based on a sample weight with the applicable moisture content for that sample; Unless otherwise stated all quality control samples performed within specifications established by the Laboratory. Terpenes analyzed by SOP-022.

### Amended

6631 Schuster Street  
Las Vegas, NV  
(702) 826-2700  
http://www.nvcann.com

Rev.1: Changed client name, original CoA found at 1908NVC1326-657

*Hui Wang*  
Hui Wang  
Scientific Director

Confident Cannabis  
All Rights Reserved  
support@confidentcannabis.com  
(866) 506-5866



All pass limits are as specified in NAC 453A and Taxation Department Second Policies. Unless otherwise stated all quality control samples performed within specifications established by the Laboratory. This product has been tested by NV Cann Labs using valid testing methodologies and a quality system as required by Nevada state law. Values reported relate only to the product tested. NV Cann Labs makes no claims as to the efficacy, safety or other risks associated with any detected or non-detected levels of any compounds reported herein. This Certificate shall not be reproduced except in full, without the written approval of NV Cann Labs. Uncertainty and statement of conformity are available upon request. All analysis were performed at NV Cann Labs unless otherwise stated. Sampling Plan SOP-001 and Sampling Method SOP-027 were used to collect samples. If sample(s) are NOT collected by NV Cann Labs, result(s) apply to the samples as received.

Sample 179-020421-033

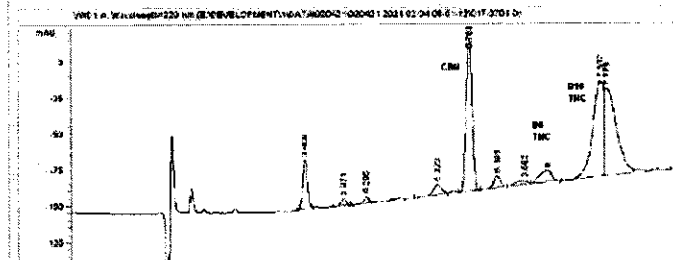
Delta 10

Sample Submitted: 02-04-2021; Report Date: 02-04-2021

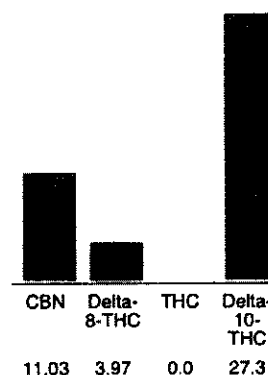
## Delta 10

Distillate

### Chromatogram



### Cannabinoid Profile



### Cannabinoid Profile by HPLC

**0.00%**  
Calculated THC Yield

**0.00%**  
Calculated CBD Yield

**42.30%**  
Total Cannabinoids

Cannabinoid	% wt	mg/g
CBN	11.03	110.3
Delta-8-THC	3.97	39.7
THC	0.0	0.0
Delta-10-THC	27.3	273.0
<b>Total Cannabinoids</b>	<b>42.30</b>	<b>423.0</b>
<b>Calculated THC Yield</b>	<b>0.00</b>	<b>0.00</b>
<b>Calculated CBD Yield</b>	<b>0.00</b>	<b>0.00</b>

Calculated Maximum THC Yield =  $THC + 0.877 * THCA$   
 Calculated Maximum CBD Yield =  $CBD + 0.877 * CBDA$

**Marin Analytics, LLC**  
250 Bel Marin Keys Blvd, Suite D4  
Novato, CA 94949

415-936-6477 / Support@MarinAnalytics.com

*Sara Biancalana*  
Sara Biancalana  
Chief Scientist

This sample has been tested by Marin Analytics, LLC using valid testing methodologies and a quality system. Values reported relate only to the sample tested. Marin Analytics, LLC makes no claims as to the efficacy, safety or other risks associated with any detected or non-detected levels of any compounds reported herein. This Certificate shall not be reproduced except in full, without the written approval of Marin Analytics, LLC.



# Certificate of Analysis

Powered by Confident Cannabis

Sample: 2106DBL0048.5908

METRC Sample:

Strain: CBN

Ordered: 06/03/2021; Sampled: 06/03/2021; Completed: 06/09/2021

## CRY-210206N

Concentrates & Extracts, Cannabinoid Isolate, Other



Pesticides



Microbials



Mycotoxins



Heavy Metals



Foreign Matter



Solvents

### Terpenes

Analyzed by 300.13 GC/FID and GC/MS

Compound	LOQ	Mass %	Mass mg/g
<LOQ Total Terpenes			
$\alpha$ -Bisabolol	0.012	<LOQ	<LOQ
$\alpha$ -Humulene	0.012	<LOQ	<LOQ
$\alpha$ -Pinene	0.012	<LOQ	<LOQ
$\alpha$ -Terpinene	0.012	<LOQ	<LOQ
$\beta$ -Caryophyllene	0.012	<LOQ	<LOQ
$\beta$ -Myrcene	0.012	<LOQ	<LOQ
$\beta$ -Pinene	0.012	<LOQ	<LOQ
Camphene	0.012	<LOQ	<LOQ
Caryophyllene Oxide	0.012	<LOQ	<LOQ
cis-Nerolidol	0.008	<LOQ	<LOQ
cis-Ocimene	0.008	<LOQ	<LOQ
$\delta$ -3-Carene	0.012	<LOQ	<LOQ
$\delta$ -Limonene	0.012	<LOQ	<LOQ
Eucalyptol	0.012	<LOQ	<LOQ
$\gamma$ -Terpinene	0.012	<LOQ	<LOQ
Geraniol	0.012	<LOQ	<LOQ
Guaiol	0.012	<LOQ	<LOQ
Isopulegol	0.012	<LOQ	<LOQ
Linalool	0.012	<LOQ	<LOQ
p-Cymene	0.012	<LOQ	<LOQ
Terpinolene	0.012	<LOQ	<LOQ
trans-Nerolidol	0.004	<LOQ	<LOQ
trans-Ocimene	0.004	<LOQ	<LOQ

### Cannabinoid Relative Concentration

Analyzed by 300.18 UHPLC/PDA

Compound	LOQ %	Mass %	Mass mg/g	Relative Concentration
<LOQ Total THC				
<LOQ Total CBD				
<b>99.900%</b>				
<b>Total Cannabinoids</b>				
CBC	0.034	<LOQ	<LOQ	
CBCa	0.034	<LOQ	<LOQ	
CBD	0.034	<LOQ	<LOQ	
CBDa	0.034	<LOQ	<LOQ	
CBDV	0.034	<LOQ	<LOQ	
CBDVa	0.034	<LOQ	<LOQ	
CBG	0.034	<LOQ	<LOQ	
CBGa	0.034	<LOQ	<LOQ	
CBL	0.034	<LOQ	<LOQ	
CBN	0.034	99.900	999.00	
$\Delta$ 8-THC	0.034	<LOQ	<LOQ	
$\Delta$ 9-THC	0.034	<LOQ	<LOQ	
THCa	0.034	<LOQ	<LOQ	
THCV	0.034	<LOQ	<LOQ	
THCVa	0.034	<LOQ	<LOQ	

Total THC = 0.877 x THCa +  $\Delta$ 9-THC +  $\Delta$ 8-THC; Total CBD = CBDa \* 0.877 + CBD



*Benjamin G.M. Chew, Ph.D.*  
Benjamin G.M. Chew, Ph.D.  
Laboratory Director

*Glen Marquez*  
Glen Marquez  
Quality Control



4439 Polaris Ave  
Las Vegas, NV  
(702) 728-5180

www.dblabslv.com

This report is considered highly confidential and the sole property of the customer. DB Labs will not discuss any part of this study with personnel other than those authorized by the client. The results described in this report only apply to the samples analyzed. The reported result is based on a sample weight with the applicable moisture content for that sample. LOQ = Limit of Quantitation. Pesticide LOQ = Instrument Limit of Quantitation, NA = Not Analyzed, ND = Not Detected, NR = Not Reported, NT = Not Tested. PGR = Plant Growth Regulator. Unless otherwise stated all quality control samples performed within specifications established by the Laboratory. This product has been tested by DB Labs, LLC (MME# 61887736101164525768) using valid testing methodologies and a quality system as required by Nevada state law. Edibles are picked up prior to final packaging unless otherwise stated. Values reported relate only to the product tested. The uncertainty of measurement associated with the measurement result reported in this certificate is available from the organization upon request. DB Labs makes no claims as to the efficacy, safety or other risks associated with any detected or non-detected levels of any compounds reported herein. This Certificate shall not be reproduced except in full, without the written approval of DB Labs.



# Certificate of Analysis

Powered by Confident Cannabis

Sample: 2106DBL0048.5908  
METRC Sample:

Strain: CBN

Ordered: 06/03/2021; Sampled: 06/03/2021; Completed: 06/09/2021

## CRY-210206N

Concentrates & Extracts, Cannabinoid Isolate, Other

### Pesticides

Analyzed by 300.9 LC/MS/MS and GC/MS/MS

Pass

Compound	LOQ PPB	Limit PPB	Mass PPB	Status
Abamectin	10	200	<LOQ	Pass
Acequinocyl	10	4000	<LOQ	Pass
Bifenazate	10	400	<LOQ	Pass
Bifenthrin	10	100	<LOQ	Pass
Cyfluthrin	10	2000	<LOQ	Pass
Cypermethrin	10	1000	<LOQ	Pass
Daminozide	10	800	<LOQ	Pass
Dimethomorph	10	2000	<LOQ	Pass
Etoxazole	10	400	<LOQ	Pass
Fenhexamid	10	1000	<LOQ	Pass
Flonicamid	10	1000	<LOQ	Pass
Fludioxonil	10	500	<LOQ	Pass
Imidacloprid	10	500	<LOQ	Pass
Myclobutanil	10	400	<LOQ	Pass
Pacllobutrazol	10	400	<LOQ	Pass
Piperonyl Butoxide	10	2000	<LOQ	Pass
Pyrethrins	10	2000	<LOQ	Pass
Quintozene	10	800	<LOQ	Pass
Spinetoram	10	1000	<LOQ	Pass
Spinosad	10	1000	<LOQ	Pass
Spirotetramat	10	1000	<LOQ	Pass
Thiamethoxam	10	400	<LOQ	Pass
Trifloxystrobin	10	1000	<LOQ	Pass
Plant Growth Regulators	10	50	<LOQ	Pass

### Microbials

Analyzed by 300.1 Plating:QPCR

Pass

Quantitative Analysis	LOQ CFU/g	Limit CFU/g	Mass CFU/g	Status
Bile-Tolerant Gram-Negative Bacteria	10	100	<LOQ	Pass
Yeast & Mold	100	1000	<LOQ	Pass

Qualitative Analysis	Detected or Not Detected	Status
E. Coli	Not Detected	Pass
Salmonella	Not Detected	Pass

### Mycotoxins

Analyzed by 300.2 Elisa

Pass

Mycotoxin	LOQ PPB	Limit PPB	Mass PPB	Status
Aflatoxins	4.0	20.0	5.7	Pass
Ochratoxin A	2.0	20.0	8.2	Pass

### Heavy Metals

Analyzed by 300.8 ICP/MS

Pass

Element	LOQ PPB	Limit PPB	Mass PPB	Status
Arsenic	46	2000	<LOQ	Pass
Cadmium	46	820	<LOQ	Pass
Lead	46	1200	<LOQ	Pass
Mercury	46	400	<LOQ	Pass

### Residual Solvents

Analyzed by 300.13 GC/FID and GC/MS

Pass

Compound	LOQ PPM	Limit PPM	Mass PPM	Status
Butanes	75	500	<LOQ	Pass
Ethanol	75		<LOQ	Tested
Heptanes	75	500	<LOQ	Pass
Propane	75	500	<LOQ	Pass



*Benjamin G.M. Chew, Ph.D.*  
Benjamin G.M. Chew, Ph.D.  
Laboratory Director

*Glen Marquez*  
Glen Marquez  
Quality Control



4439 Polaris Ave  
Las Vegas, NV  
(702) 728-5180  
www.dblabslv.com

This report is considered highly confidential and the sole property of the customer. DB Labs will not discuss any part of this study with personnel other than those authorized by the client. The results described in this report only apply to the samples analyzed. The reported result is based on a sample weight with the applicable moisture content for that sample. LOQ = Limit of Quantitation. Pesticide LOQ = Instrument Limit of Quantitation, NA = Not Analyzed, ND = Not Detected, NR = Not Reported, NT = Not Tested. PGR = Plant Growth Regulator. Unless otherwise stated all quality control samples performed within specifications established by the Laboratory. This product has been tested by DB Labs, LLC (MME# 61887736101164525768) using valid testing methodologies and a quality system as required by Nevada state law. Edibles are picked up prior to final packaging unless otherwise stated. Values reported relate only to the product tested. The uncertainty of measurement associated with the measurement result reported in this certificate is available from the organization upon request. DB Labs makes no claims as to the efficacy, safety or other risks associated with any detected or non-detected levels of any compounds reported herein. This Certificate shall not be reproduced except in full, without the written approval of DB Labs.